

PROJECT REF:	Louvre Screen Support
UNIT REF:	N/A
FOOT PRESSURE:	N/A
UDL:	N/A

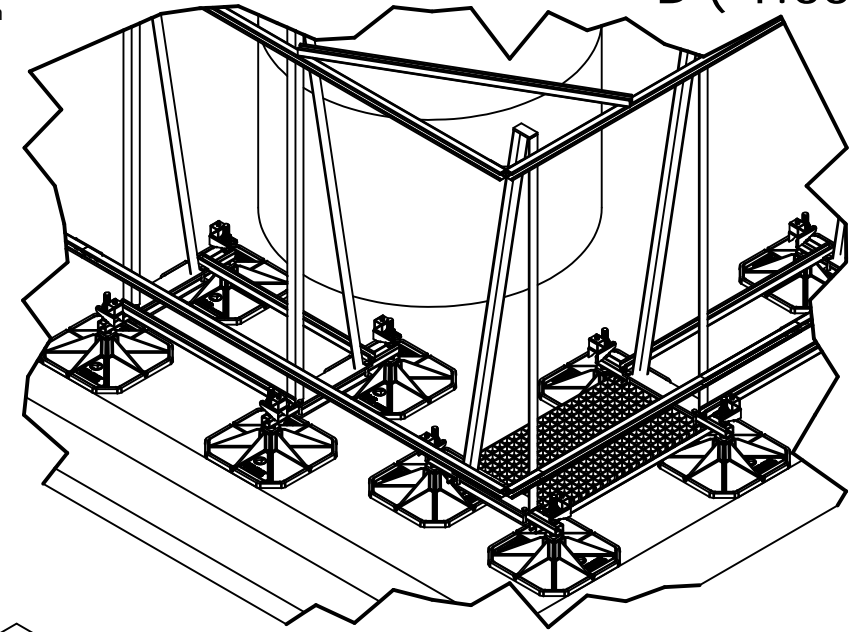
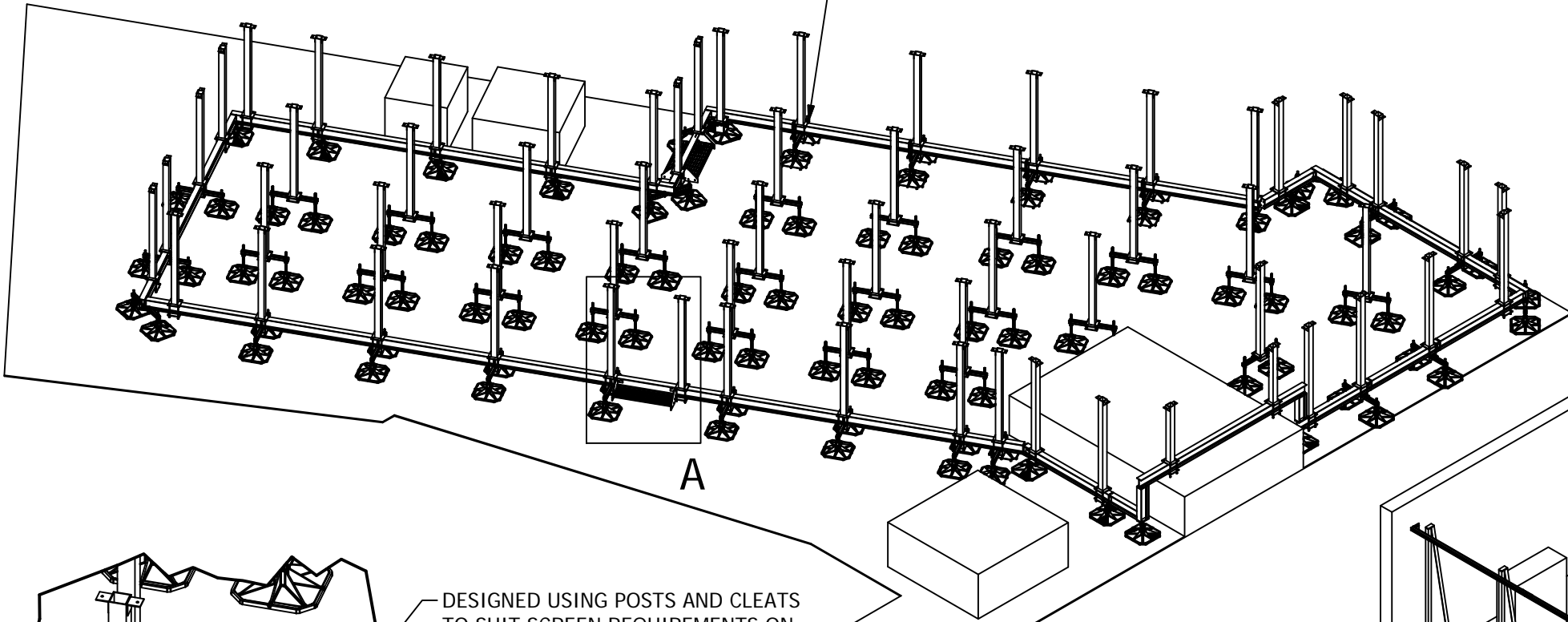
Material grade: BS EN 10219-1:2006 (S235JR). Welding standard: BS EN ISO 15614-1. Galvanizing standard: BS EN ISO 1461:2009
 Reference specification document "Custom Fabrication Specification" (BF-SPEC-050411) for further information
 Reference specification document "Big Foot Systems Cross Bar Specification (BF-SPEC-230610) for further information

HD BEAMS CAN BE POSITIONED TO SUIT THE LOADING REQUIREMENTS OF THE ROOF. WITH 3 VARIATIONS IN FOOT SIZE FOR SUITABLE LOAD DISTRIBUTION AND 2 VARIATIONS IN HEIGHT THE SYSTEM CAN BE TAILORED TO SUIT.

B (1:33)

A

A

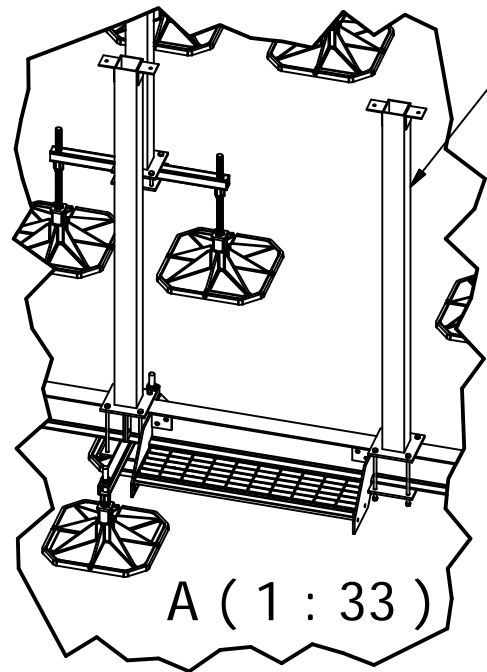


B

B

A-FRAME SYSTEM CAN BE USED TO PROVIDE EITHER VERTICAL OR A SLOPED FINISH TO THE SCREEN. THE DEPTH OF THE HD BEAM PROVIDES STABILITY TO THE SYSTEM AND CAN ALSO SUPPORT CROSS BEAMS FOR BALLASTING THE SYSTEM DOWN TO IMPROVE STABILITY.

DESIGNED USING POSTS AND CLEATS TO SUIT SCREEN REQUIREMENTS ON SITE, INCLUDING CENTRAL POSTS FOR A ROOF SUPPORT



A (1 : 33)



System designed to suit louvre screen requirements and site layout. Allowable foot pressure will be subject to roof build up, typically detailed by a structural engineer. Big Foot's technical office is able to analyse deflection and bending stresses within the system and the overall wind stability.

Working conditions: Suitable for internal or external applications in temperatures between -40°C to +80°C

Material Specification				
Part/Description	Material	Regulation Conformance	Density	
			kg/m3	lbs/ft3
Foot	Nylon GF-30%		1140	71
Mat	Rubber	BS7188:1989	650-1020	41-64
Metalwork	Galvanised Steel ASTM-A36	BS EN ISO1461:1999	7800	487

C

C

D

D

10, 13, 17, 19 & 36mm 25Nm on self drilling screws 30Nm on strut fixings. 35Nm on post/A-Frame clamp bolts

Installation and application considerations should include health, safety and environmental needs, regulations and standards, codes of practice, climate conditions, installation location, product orientation, evaluation of the roof structure, composition, surface and condition, ancillary and complimentary products and materials. Big Foot Systems recommend that all rooftop products are handled and installed by suitably qualified persons. All scheme designs are based on the use of Big Foot Systems' products and materials only. Terms and conditions available on request

REV A	DATE:	10/05/2016
	DRAWN:	S BIRCH
	CHECKED:	A SIMMANS

SCALE:	1:20
DIMENSIONS IN	mm U.O.S
TOLERANCES:	0.0 ± 0.5mm U.O.S
SHEET	1 OF 1

A3

TITLE:	LOUVRE SUPPORT PRODUCT INFORMATION SHEET
DWG No.	BFP-LVS.dwg

THIS DRAWING IS COPYRIGHT AND THE PROPERTY OF BIG FOOT SYSTEMS LIMITED

